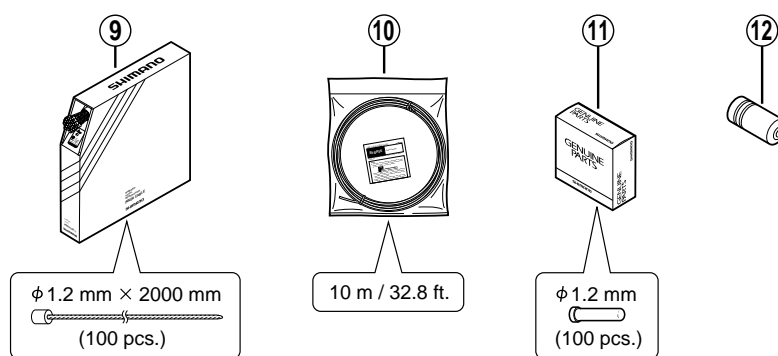
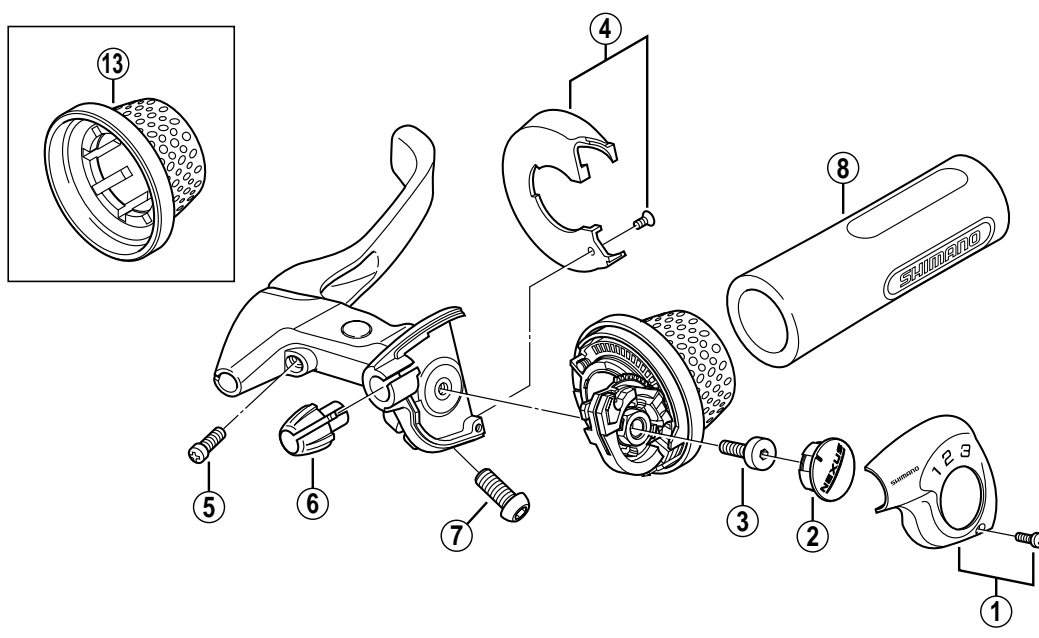


SHIMANO NEXUS Revo-Shift Lever (For 3-Speed)

SB-3S30 3-Finger

SB-3S30-J 2.5-Finger



SL-4S35
SL-3S10
SL-3S35-E

ITEM NO.	SHIMANO CODE NO.	DESCRIPTION	INTERCHANGEABILITY
1	Y-65U 98010	Indicator Cover & Fixing Screw (M2.5 x 7)	B B
2	Y-65P 98040	Indicator	A A
3	Y-65L 13000	Shifting Lever Unit Fixing Bolt (M4 x 13.5)	
4	Y-65U 98020	Lever Cover & Fixing Screw	
5	Y-89E 05010	Reach Adjusting Screw (M4 x 10.8)	
6	Y-65U 04000	Outer Casing Holder	A A
7	Y-8SB 10000	Clamp Bolt (M6 x 14.8)	
8	Y-61X 14000	Half Grip (φ22.2 mm / Gray)	A A A
	Y-61X 14010	Half Grip (φ22.2 mm / Black)	A A A
9	Y-600 98510	Inner Cable Box (Stainless / 100 pcs.) for Shift	A A A
10	Y-6Z2 98100	SIS-SP40 Outer Casing (Black) for Shift	
	Y-6Z2 98110	SIS-SP40 Outer Casing (Hight-Tech Gray) for Shift	
11	Y-620 98030	Inner End Caps (φ1.2 mm / 100 pcs.)	A A A
12	Y-6ZA 98010	SIS-SP40 Outer Caps (Black / φ6 mm / 100 pcs.)	
13	Y-65P 03100	Shift Actuator (Black)	A A

The table indicates the adaptability of conventional parts to SB-3S30 / 3S30-J.

A : Same parts.

B : Parts are usable, but differ in materials, appearance, finish, size, etc.

Absence of mark indicates non-interchangeability.

9908-1721C

Specifications are subject to change without notice.

SHIMANO