

Replacing spoke-hole plugs by rim tape

DURA-ACE clincher tyre wheel sets WH-7850-C24-CL and WH-7850-C50-CL

We have found that there is a greater likelihood of a puncture in DURA-ACE clincher tyre wheels WH-7850-C24-CL and WH-7850-C50-CL. This is due to the surface texture of the rim in combination with the use of spoke-hole plugs.

The phenomenon can be very easily eliminated by replacing the spoke-hole plugs with genuine 18 mm high pressure Shimano rim tape.

What to do?

If you have sold any wheels, or bicycles equipped with these wheels, that are affected – where possible – please notify the customer or user about this modification. We will issue a press release to inform the general public and will post all the related information on our website: <http://cycle.shimano-eu.com>

This modification applies to WH-7850-C24-CL and WH-7850-C50-CL wheels only. No other wheels are affected by this change.

If you still have stock of the affected wheels in your shop, please replace the plugs with rim tape.

We will be happy to provide the required rim tape free of charge. To obtain the rim tape – or if you require more information – please contact your local Shimano distributor.

Products affected

WH-7850-C24-CL

with spoke-hole plugs



WH-7850-C50-CL

with spoke-hole plugs



Clincher-type rim with spoke-hole plugs.



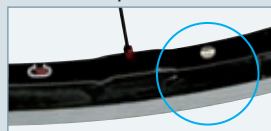
Model code: White letters on black background.

Products not affected

Either:

WH-7850-C24-CL

with rim tape



Round silver sticker near the valve hole.

WH-7850-C50-CL

with rim tape



Round silver sticker next to the DURA-ACE sticker on the right-hand side of the wheel.

Or:

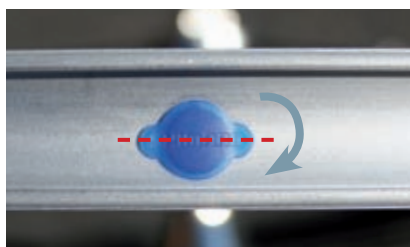


Model code: White letters on red background.

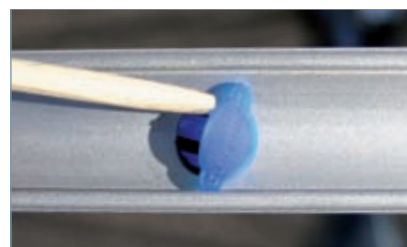
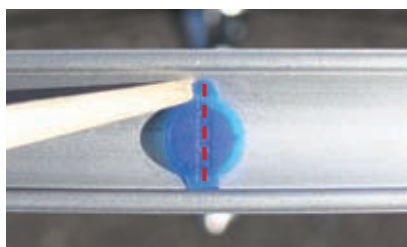
Please turn over >>>

Replacing plugs with rim tape

Remove the plugs from the spoke holes:

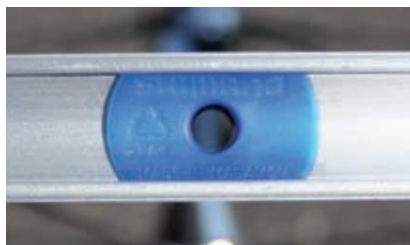


1. Using a soft object, e.g. a wooden skewer or similar, turn the plug 90°.

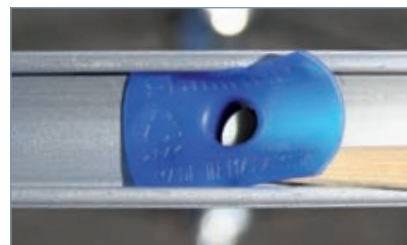
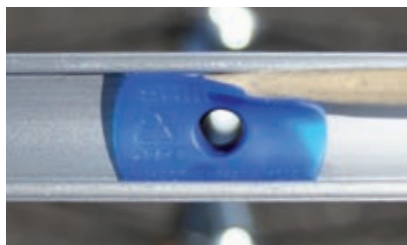


2. The plug can now be easily removed.

Remove the valve plug:



1. Using a soft object (e.g. a wooden skewer), lever up one side of the valve plug and hold it up with the fingers of the other hand.



2. Then lever up the other side, again using a soft tool. The plug should now come away easily.

Installing the rim tape:

Follow the usual procedure for installing rim tape. Please use genuine 18 mm high pressure Shimano rim tape.



Make sure all plugs have been removed, then prepare the rim tape. Push the rim tape onto the rim. Done!

Product Modification

Newsletter 3/2008 featured an item on page 14 about new spoke-hole plugs for our WH-7850-C24-CL, WH-7850-C50-CL, WH-RS80-C24-CL and WH-RS30 wheels. We have found that rim tape is more suitable after all and will be delivering all wheels with genuine 18 mm high pressure Shimano rim tape again as of now.